

PROTECTIVE INDUSTRIAL POLYMERS MISSION:
TO PROVIDE EXCEPTIONAL VALUE-ADDED PRODUCTS,
SERVICE AND SOLUTIONS, IN JOINT INTEREST WITH OUR
CONTRACTING CUSTOMER NETWORK, TO COMPLETELY
SATISFY END-USER INDUSTRIAL SAFETY, PERFORMANCE
AND REGULATORY COMPLIANCE CONCERNS.



www.protectpoly.com



High-Performance Polymer Flooring Systems
for Animal Clinics, Kennels and Boarding Facilities



Coatings | Contracting | Consulting





ANIMALSPEC

PET CARE & VETERINARY FLOOR SYSTEMS

Your veterinary and animal service floors are a reflection of your business. You've worked hard to gain the trust of customers by creating a sanitary, safe and pleasurable service experience. What your facility looks like not only creates an inviting atmosphere, but sets a precedent amongst your peers and increases employee morale.

Protective Industrial Polymers' AnimalSpec line of floor coating systems have been specifically developed to provide a safe, long-lasting, durable and aesthetically-pleasing foundation for your veterinary or animal service operation.

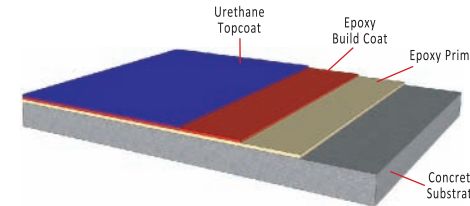
AnimalSpec flooring systems have been formulated to withstand even the highest degree of animal care-related wear and tear. From superior chemical resistance and compressive strength to aggressive wear and abrasion resistance, these flooring systems can take a beating while continuing to perform for years to come.

From high-performance epoxy/urethane coatings to heavy-duty mortars, concrete resurfacers and decorative systems, the AnimalSpec line of floor coating systems has got you covered. Whether you are a small retail service operation, veterinary clinic, kennel, training or boarding operation, we have the right flooring solution to meet and exceed your unique requirements.

AnimalSpec Flooring Systems Features:

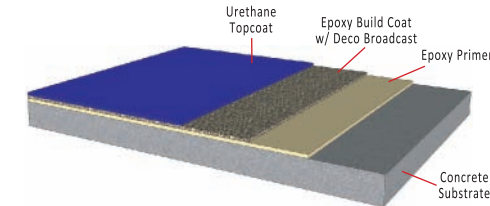
- Extremely Durable
- Scratch & Abrasion Resistant
- Resistant to Chemicals, Urine & Fecal Stains
- Easy to Clean & Maintain
- Antimicrobial Versions Available
- Thermal Shock-Resistant
- Long-Lasting Means Lower Life Cycle Costs
- Available in a Wide Array of Colors & Textures

AnimalSpec High-Performance Polymer Flooring Systems



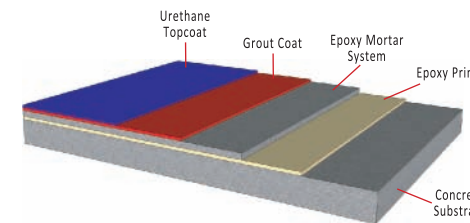
AnimalSpec HB-C High-Build Coating System

A general use floor coating system consisting of an epoxy primer, followed by an epoxy build coat. The system is top coated with a high-performance urethane. The system is suited for use in areas such as hallways, storage areas, lobbies and break rooms.



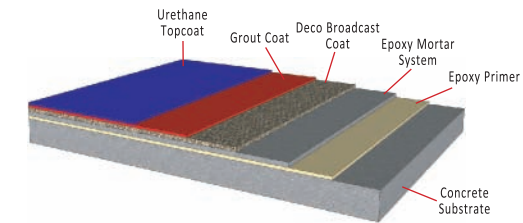
AnimalSpec Deco-HB-C Decorative High-Build Coating System

A general use decorative floor coating system consisting of an epoxy primer, followed by an epoxy build coat broadcast with decorative flake or quartz aggregate. The system is top coated with a high-performance urethane. The system is suited for general use areas where aesthetics is a requirement.



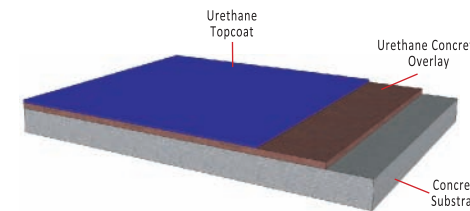
AnimalSpec EP-M High-Performance Epoxy Mortar System

A resurfacing mortar and coating system consisting of an epoxy primer, followed by a heavy-duty epoxy mortar. The system is grout coated, then top coated with a high-performance urethane. The system is suited for use in areas subject to aggressive wear, such as kennel areas, wash areas and exam rooms.



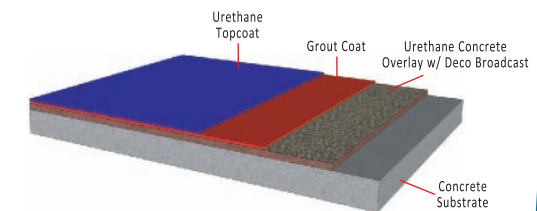
AnimalSpec Deco-EP-M High-Performance Decorative Mortar System

A resurfacing mortar and coating system consisting of an epoxy primer, followed by a heavy-duty epoxy mortar. The system is grout coated and broadcast with decorative flake or quartz media. A grout coat and urethane topcoat complete the system. This system offers all the benefits of an epoxy mortar system with a more aesthetically-pleasing decorative look.



AnimalSpec TS-M Thermal Shock-Resistant Mortar

A high-performance mortar system consisting of a urethane concrete overlay that is top coated with a high-performance urethane. This workhorse system is ideal for areas where the floor is subject to thermal cycling resulting from hot and cold water wash downs, such as animal bathing stations and holding cells.



AnimalSpec Deco-TS-M Decorative Thermal Shock-Resistant Mortar

A decorative mortar system consisting of a urethane concrete overlay with is broadcast with decorative media. The system is then grout coated and finished with a high-performance urethane topcoat. This system offers superior thermal shock-resistance combined with aesthetic beauty.

** All AnimalSpec systems are also available in an antimicrobial version. These systems are protected against bacterial and fungal growth. The antimicrobial properties will remain effective for the life of the system.*

For detailed product information,
technical data and SDS Sheets
visit www.protectpoly.com
or call 1-866-361-3331
to speak with a
Protective Industrial Polymers
Representative.



Areas of Use



Operating Rooms



Examination Rooms & Wash Areas



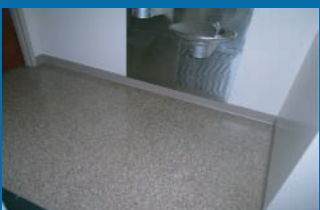
Animal Holding Cells



Lab & Service Areas



Kennel & Training Areas



Lobbies, Bathrooms & Break Rooms

