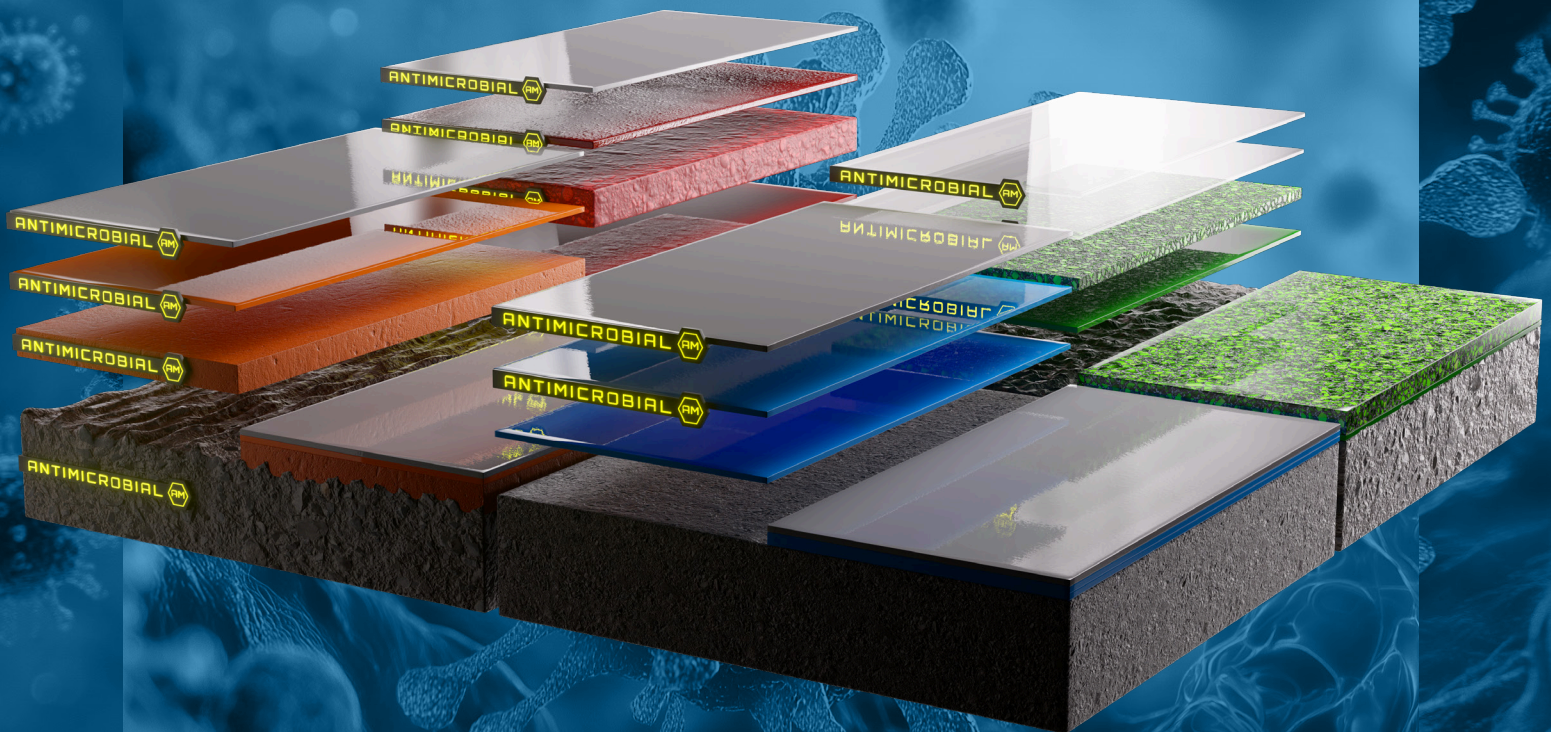




INHIBICROBE

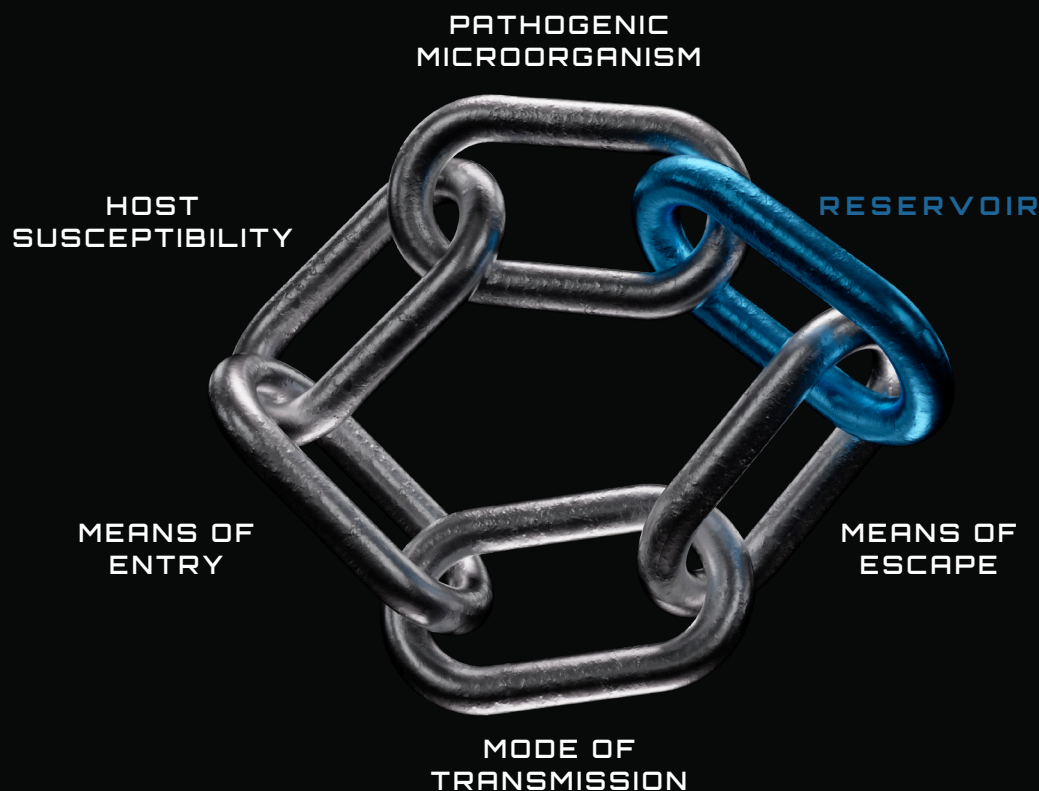
ANTI-MICROBIAL FLOOR AND WALL SYSTEMS



DO YOUR FLOORS PLAY
A ROLE IN THE CHAIN
OF TRANSMISSION?

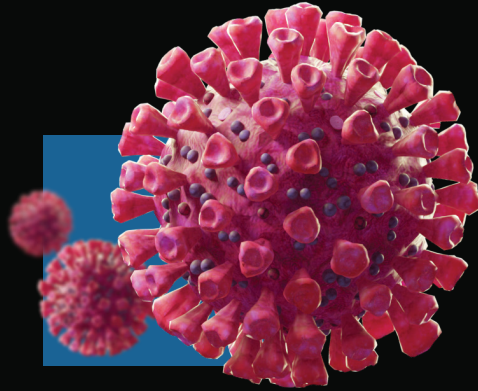
Microbe transmission can be a problem, but it is a **liability**

CHAIN OF TRANSMISSION



Pathogens can survive on **surfaces for months** and humans' subconscious ability to touch our face every 3 minutes is just one example of how pathogens can spread. Indirect contact and inhalation are two common transmission events in which a pathogen leaves the reservoir and enters a susceptible host.

Bacteria multiplies at a rapid rate, doubling every 20 minutes, potentially reaching **ONE BILLION** bacteria in a work day!

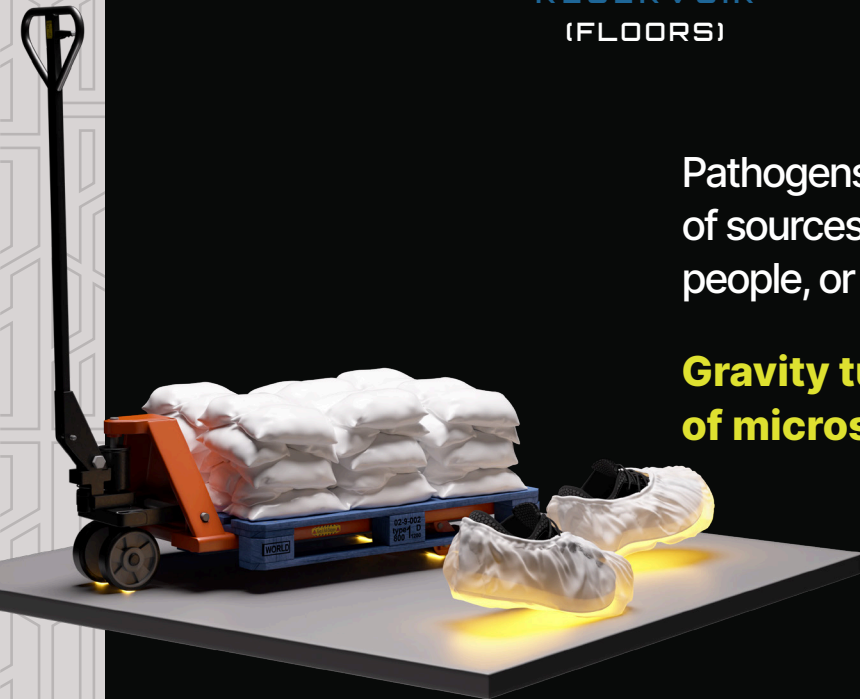


The floor harbors pathogens and that makes it a **reservoir**.

RESERVOIR
(FLOORS)

Pathogens can get on the floor from a variety of sources including under the shoes of people, or on the wheels of equipment.

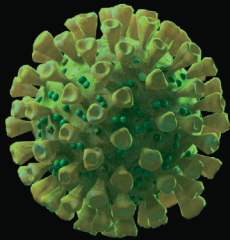
Gravity turns floors into depositories of microscopic organisms.



So what's the problem?

Isn't the floor a low-touch surface? It's not like the pathogens are going to jump off the floor...

You touch the floor more than you think!



Bacteria

A study found when inspecting shoes an average of 421,000 units of different bacteria. Bacteria found on the footwear included *E. coli* as well as other bacteria-causing pneumonia (*Klebsiella pneumoniae*) and respiratory tract infections (*Serratia ficaria*).

(University of Arizona)



Transfer

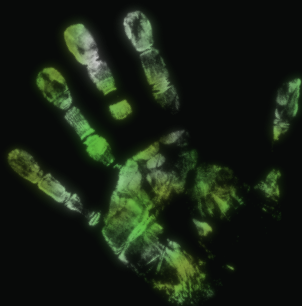
The transfer rate from shoe to clean tile was an alarming 90-99%

(University of Arizona)

High-Touch Objects

The average person touches the floor with their hand 50 or more times everyday through indirect contact.

(Mark Warner, formerly with the Department of Homeland Security)



Hands

57% of objects that became contaminated from contact with the floor transfer pathogens (bacteria) to hands.

(Deshpande, Abhishek, AIUC)



Your floor can **cough**!

Resuspended dust is estimated to constitute up to 60% of the total particulate matter in indoor air...making floor dust a major source of the microorganisms that we breathe.

(Alshitawi and Awbi, 2011; Ocak et al., 2012)

FLOORS ARE AN UNDER-APPRECIATED SOURCE FOR PATHOGEN TRANSMISSION

Through high-touch objects, water droplets, and walking-induced dust resuspension, pathogenic microorganisms can be transmitted from the floor to a susceptible host.



Your floor can **sneeze**!

A single drop of water can create hundreds of tiny airborne droplets, each one carrying as many as several thousand live bacteria.

(Ekaterina Mirskaya & Igor E. Agranovski., 2018)



Did you know you can make your existing floors antimicrobial?

InhibiCrobe Solutions are available for almost any existing hard surface or you can create a new interdependent antimicrobial flooring system.



INHIBICROBE

ANTI-MICROBIAL FLOOR AND WALL SYSTEMS

— WHY NOT? —

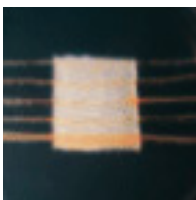
Antibacterial + Antifungal = Antimicrobial

InhibiCrobe, antimicrobial systems work at a cellular level to continually disrupt and inhibit the growth of harmful microorganisms and even contribute to protect surfaces against viruses.

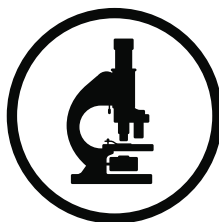
Did you know?

Antimicrobial Additive ≠ Antimicrobial Surface

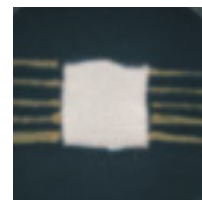
Just because a solution contains an antimicrobial additive does not ensure the finished product is effective at preventing microbe growth. PIP's InhibiCrobe technology has been independently tested and verified as a finished flooring system to be an effective antimicrobial surface.



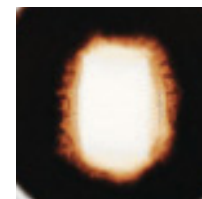
UNTREATED



THIRD PARTY
LAB TESTED AND VERIFIED



TREATED



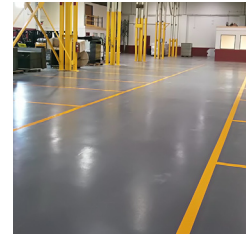


Validated solutions that can help reduce risk exposure

EXISTING FLOORING

InhibiCrobe solutions are available for almost any hard surface

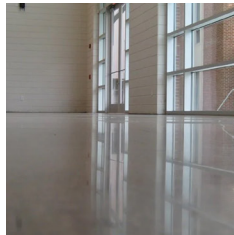
Transform the following: Terrazzo, Tile, Wood, Polymer, Concrete



CONCRETE TREATMENTS

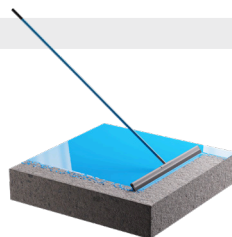
InhibiCrobe solutions are available in the entire ProForm line of concrete treatments

CD Series - Concrete Densifiers
(Polishing/Dust Proofing)
VM Series - Vapor Mitigators



FLOORING SYSTEMS

InhibiCrobe solutions are available in the entire Protect line of industrial flooring systems



CT-Series
FLOOR COATING



BC-Series
BROADCAST FLOORING



SL-Series
SLURRY FLOORING

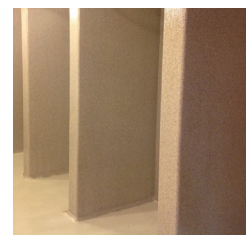


MT-Series
MORTAR FLOORING

WALL SYSTEMS

InhibiCrobe solutions are available in the entire ProWall line of professional wall systems

VC Series - Vertical Coating Systems
VR Series - Vertical Rendering Systems
VL Series - Vertical Lining Systems



THE FIRST IN MAKING IT LAST



PROTECTPOLY.COM
INFO@PROTECTPOLY.COM
(800) 974-1323