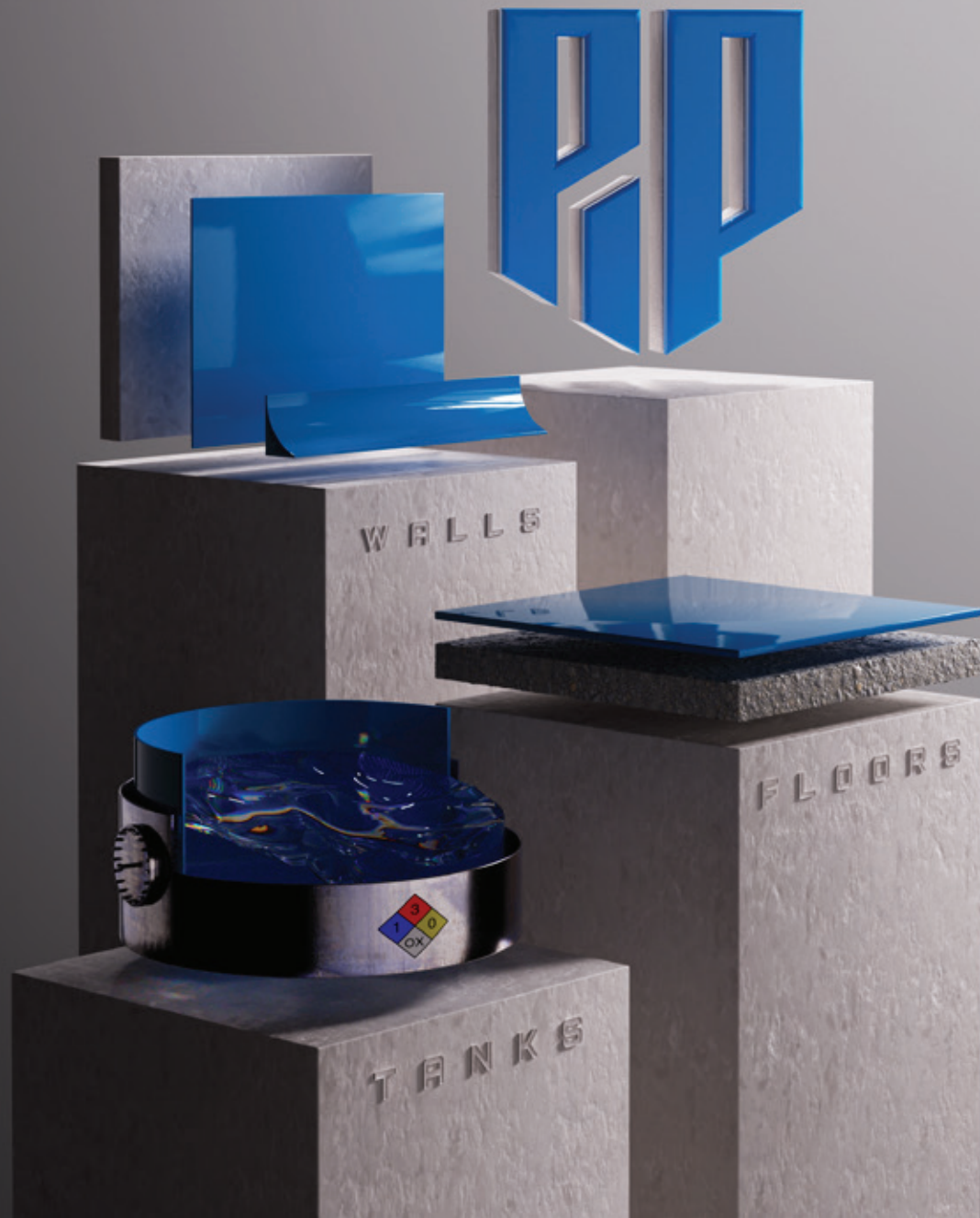


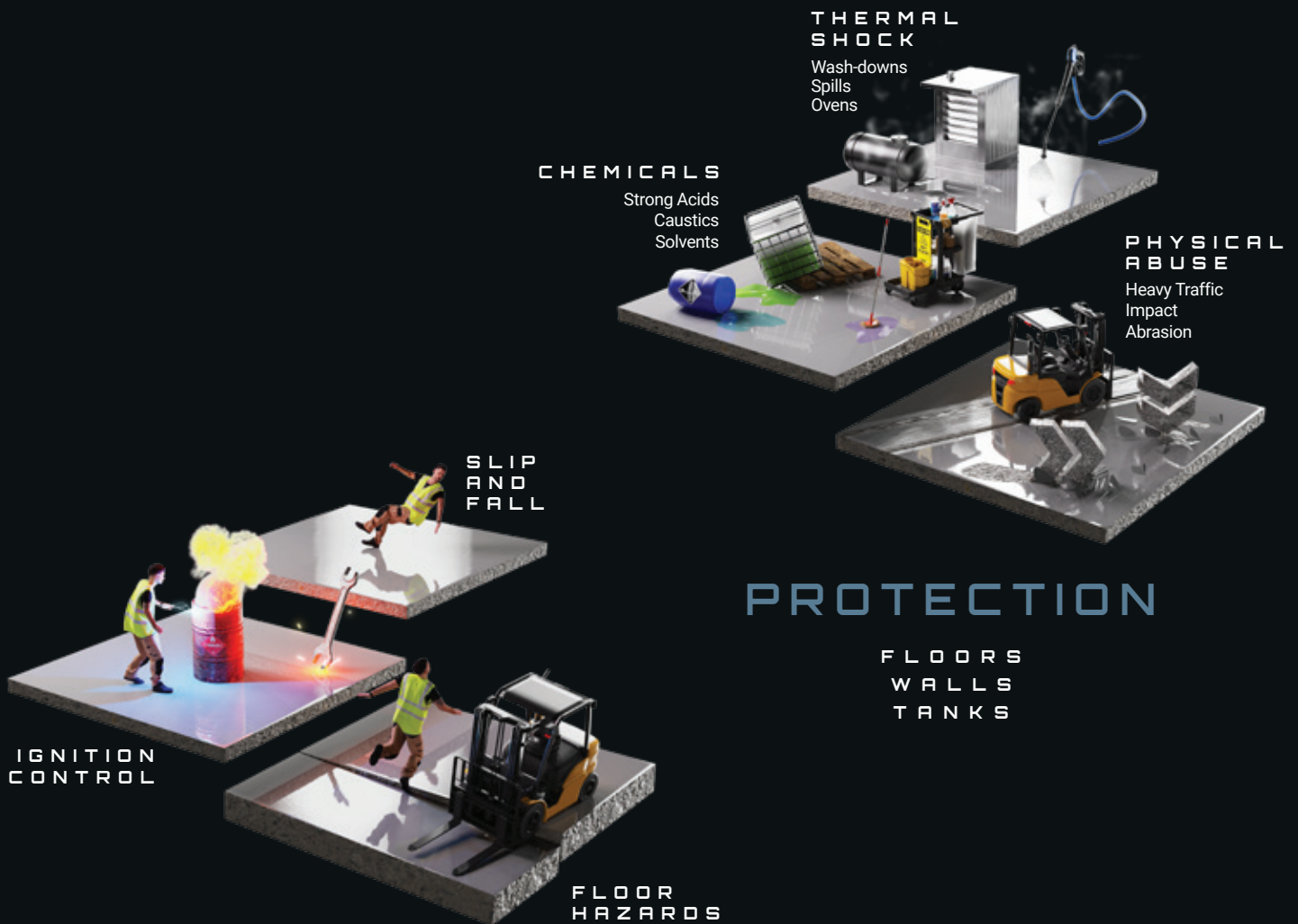
WHAT IS A CONSULTATIVE MANUFACTURER?





WHY POLYMER IS APPLIED TO

FLOORS WALLS AND TANKS



SAFETY

TEXTURE
PATCHWORK
STATIC

LOBBIES
TOUR ROUTES

QC LABS
OFFICES

BREAK ROOMS
BATHROOMS

AESTHETICS

METALLIC
FLAKE
QUARTZ

5S

FDA

EPA

ERODED
CONCRETE

JOINTS
CRACKS

PONDING

COMPLIANCE

REGULATED
ENVIRONMENTS

RESTORATION

DETERIORATED FLOORS
TRENCHES
JOINTS

WE'RE MORE THAN A MANUFACTURER

Research, design, and execute projects with PIP's Consultative platform. PIP manufactures polymers to cover floors, walls and tanks and provides a consultative model to assist with projects.



THIS IS WHAT

MAKES US A

CONSULTATIVE

MANUFACTURER



NON-TRANSACTIONAL PARTNERSHIP MINDSET

By not being transactionally engaged it allows for an **ONGOING PARTNERSHIP** rooted in objectivity that allows for constructive feedback and effective communication.

LIMITLESS CAPABILITIES

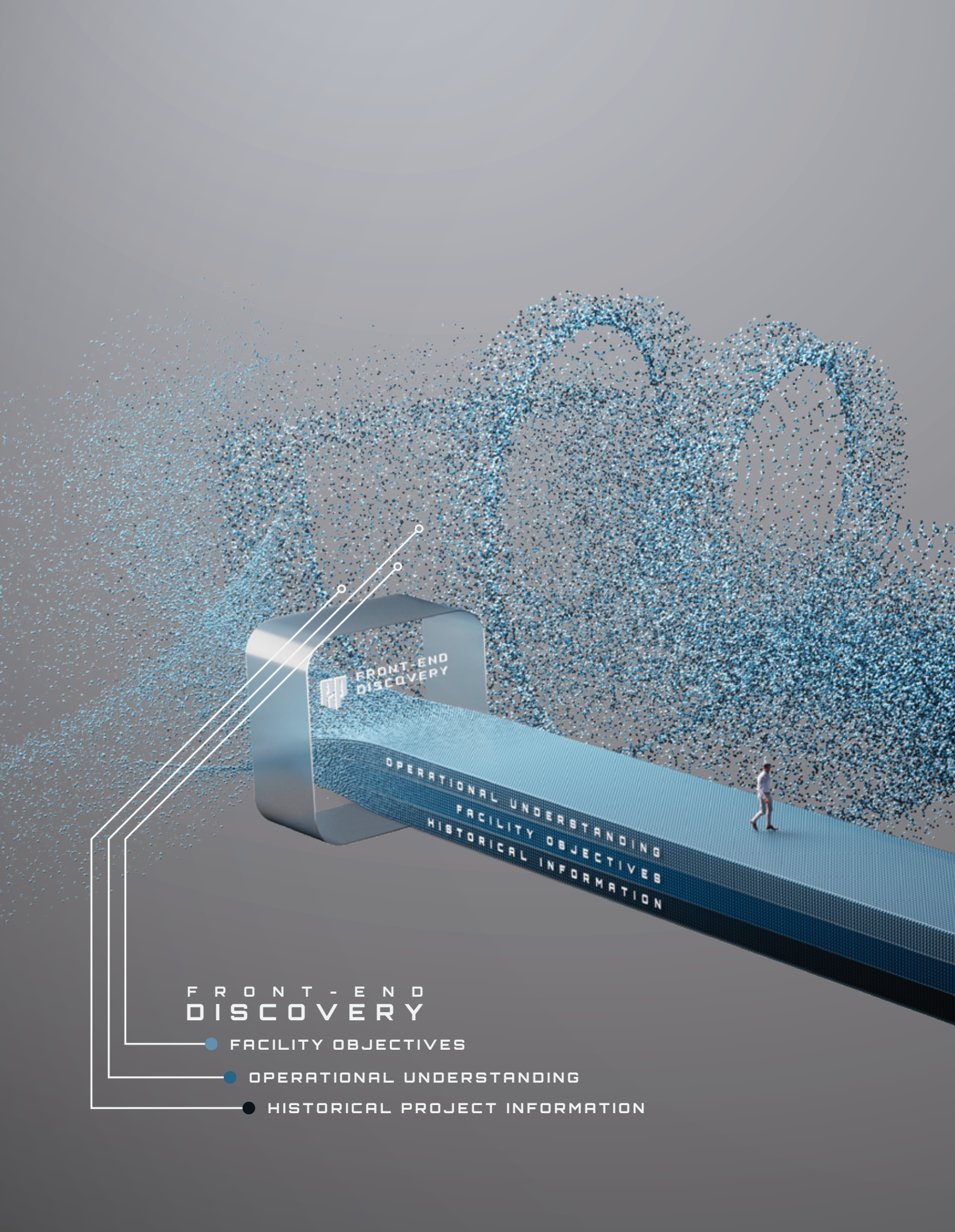
During the **CONTRACTOR ALIGNMENT** phase, we carefully consider factors like size and scope, service requirements, and specialty credentials to seamlessly align the solution to a contractor partner.

VENDOR-NEUTRAL SOLUTIONS

Through our **SOLUTION BUILDING** process we can provide a custom-tailored comprehensive risk assessment tool to make your own internal decisions based on your risk appetite and capital spending strategies.

PROACTIVE APPROACH

In the **FRONT-END DISCOVERY** phase, our dedicated team will proactively seek an in-depth understanding of your operational pain points, facility objectives, historical project insights, helping us to reduce stress and minimize mistakes during the decision-making process.



FRONT-END
DISCOVERY

OPERATIONAL UNDERSTANDING
FACILITY OBJECTIVES
HISTORICAL INFORMATION

FRONT-END DISCOVERY

- FACILITY OBJECTIVES
- OPERATIONAL UNDERSTANDING
- HISTORICAL PROJECT INFORMATION



PROACTIVE APPROACH

As a consultative manufacturer, we believe in prioritizing early engagement, facilitated by a dedicated role focused on discovery and coordination. During the discovery phase, our focus is to achieve a thorough operational understanding of your facility and its objectives. This entails gathering historical project information, identifying preferences, and understanding any facility-specific objectives. These insights are then able to be seamlessly integrated throughout the entire recommendation process.

By conducting this process prior to project commencement, our goal is to minimize stress and mitigate the potential for mistakes that may arise from rushed decision-making.

VENDOR-NEUTRAL SOLUTION DESIGN



As a manufacturer with access to thousands of system combinations, we recognize that this variety when combined with unlimited environmental variables can complicate solution selection. To address this, our methodical approach involves a specialized team led by Solution Design Managers, including SMEs, Formulators, and Application Experts. They systematically assess risk categories for your facility—such as exposure, finished design, and substrate conditions—to narrow down options effectively. We can finalize and present our solutions in two ways. First, we can provide the industry-standard approach where our team interprets your risk tolerance and capital strategies to make final recommendations.

Alternatively, what makes us a consultative partner is our ability to maintain neutrality in the design process through the Polymer System Report (PSR). This innovative industry first tool enables you to leverage our technical expertise while applying your own internal risk tolerance and capital strategies.

THOUSANDS OF
COMBINATIONS

INDUSTRY
STANDARD

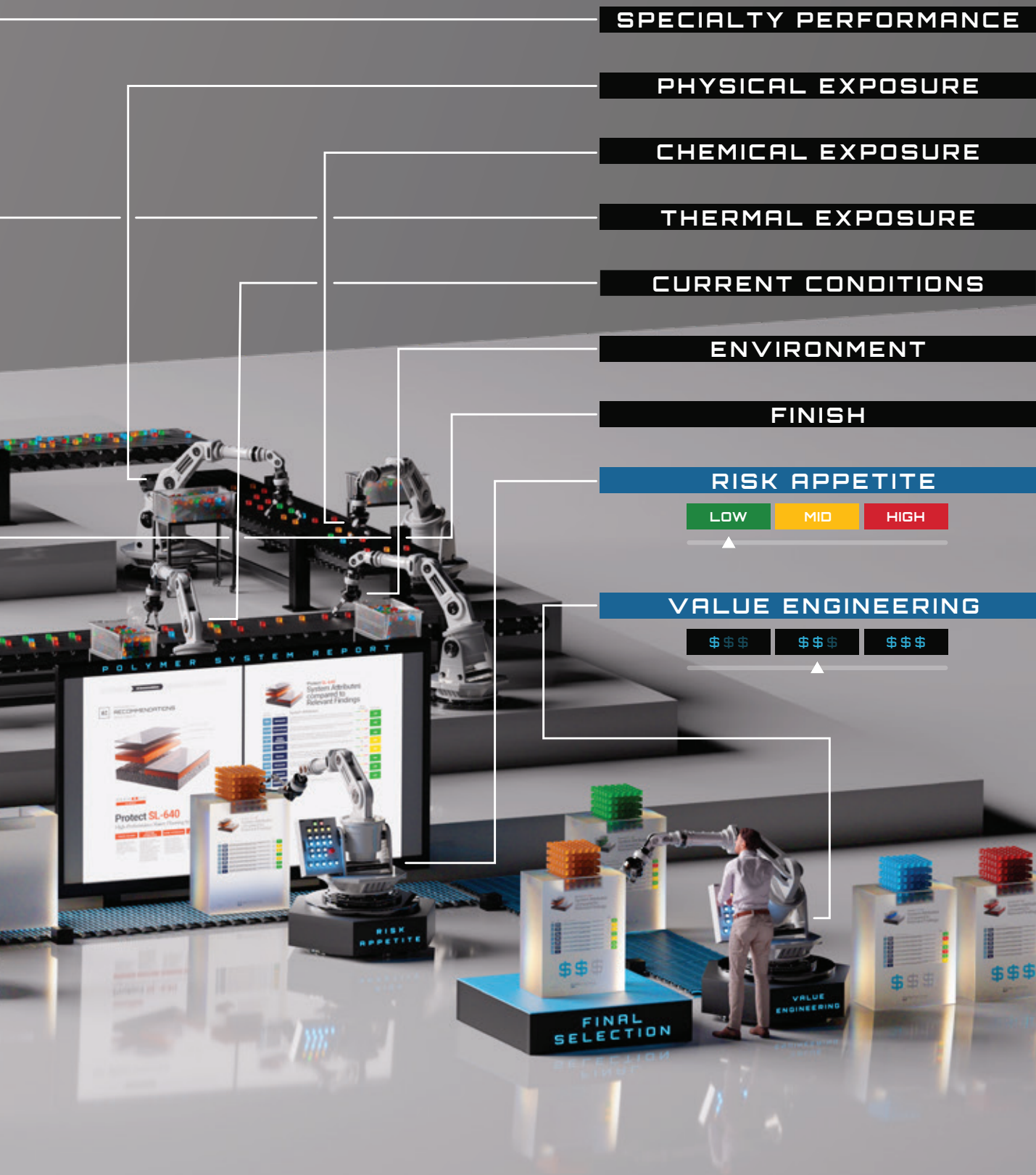


POLYMER
SYSTEM
REPORT



INDUSTRY
PRESENTS IDEAL
RECOMMENDATION

INDUSTRY STANDARD



**PSR GUIDES
END-USER
DESIGN INPUT**

POLYMER SYSTEM REPORT

L I M I T L E S S CAPABILITIES



As a consultative manufacturer involved in the custom design of solutions, we are uniquely positioned in the marketplace to facilitate the execution of installations through our contractor alignment process, without being limited by our own capabilities. This flexibility allows us to address a limitless range of needs through our specialized contractor partners while maintaining the convenience of a single consultative partner.



F I R S T MANUFACTURING

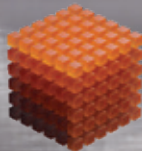
S E C O N D MANUFACTURING

At PIP, we understand that delivering a solution involves two crucial manufacturing processes: first in controlled conditions at our facility, and then in the dynamic environment of your facility. When it comes to the latter while specialization is generally seen as superior to generalization, choosing the right asset (or in this example, tool) to execute your project can be risky or burdensome. To mitigate potential risks or tasks, we recognize the convenience of favoring the all-in-one general-purpose approach; however, it comes with the inherent limitation of not being able to cater to the unique requirements of every single project under one roof.

CONTRACTOR ALIGNMENT

- LOCATION ✓
- LABOR REQ ✗
- CERTS ✓
- SIZE ✓
- FREQUENCY ✗
- SCOPE ✗

- LOCATION ✓
- LABOR REQ ✓
- CERTS ✓
- SIZE ✓
- FREQUENCY ✓
- SCOPE ✓



PROJECT-SPECIFIC CONTRACTOR ALIGNMENT PROCESS

FREQUENCY	SIZE	CREDENTIALS
LABOR REQ	LOCATION	SCOPE

PIP's alignment process is the method through which we carefully select and match trusted contractor partners to specific project requirements. This involves assessing factors such as the size and scope of the project, specialty credentials, and service needs to ensure the right fit. We believe that the correct contractor partner is an integral part of the overall solution, ensuring that the unique needs of each project are met effectively.

THE SPECIALIZATION OF INDEPENDENT
THE CONVENIENCE OF TURNKEY

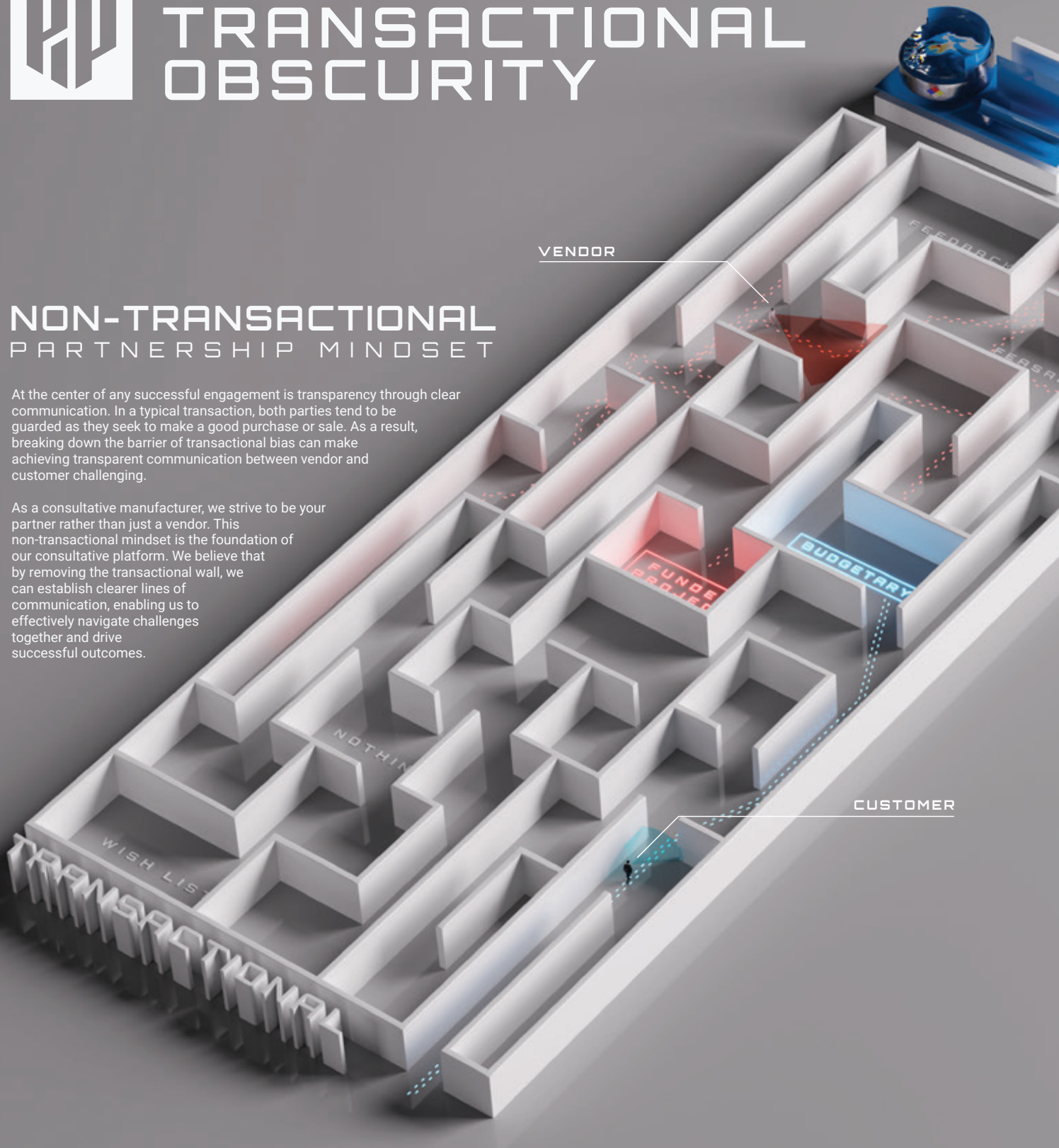


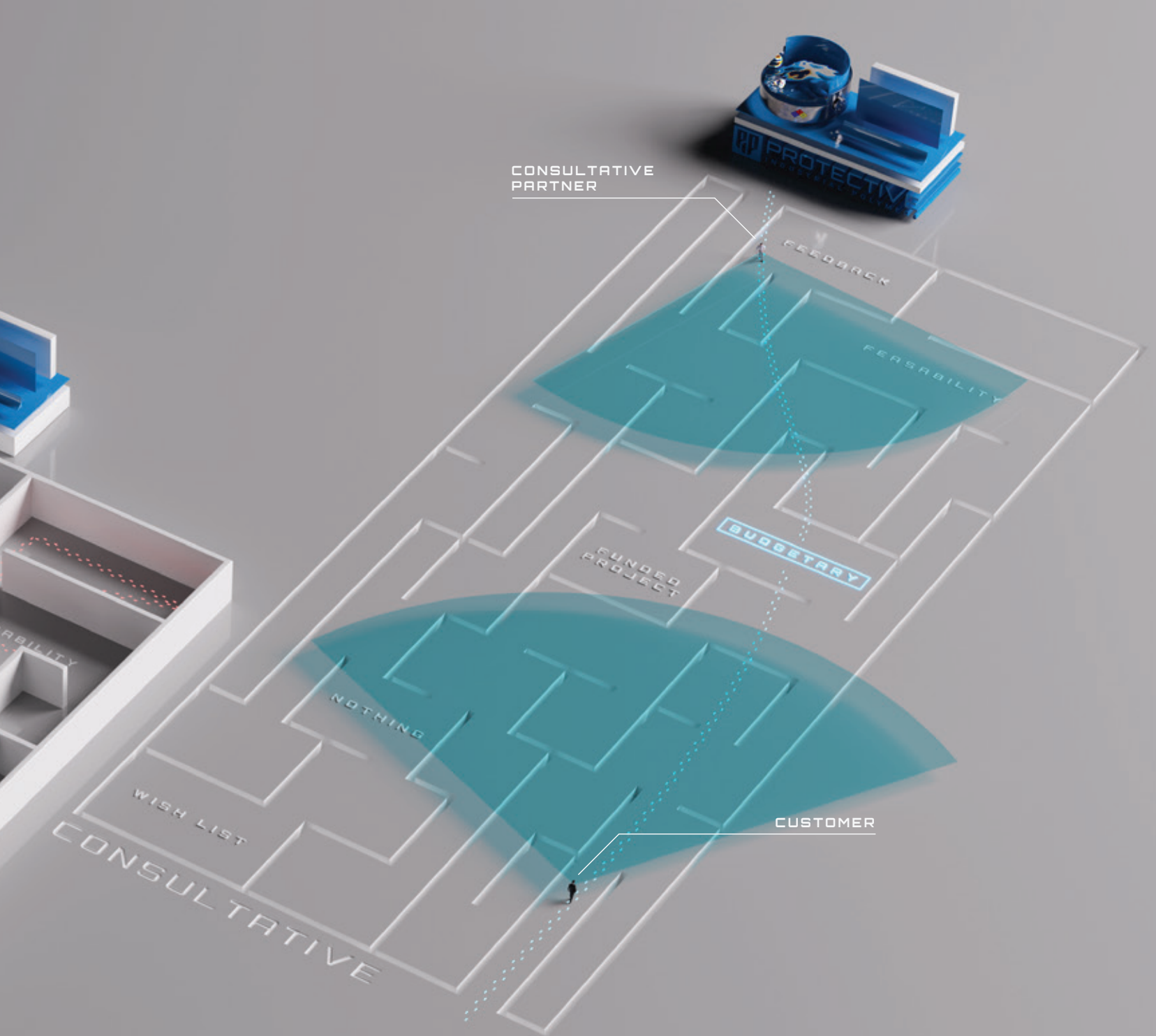
MANUFACTURER-GRADE ADVICE WITHOUT TRANSACTIONAL OBSCURITY

NON-TRANSACTIONAL PARTNERSHIP MINDSET

At the center of any successful engagement is transparency through clear communication. In a typical transaction, both parties tend to be guarded as they seek to make a good purchase or sale. As a result, breaking down the barrier of transactional bias can make achieving transparent communication between vendor and customer challenging.

As a consultative manufacturer, we strive to be your partner rather than just a vendor. This non-transactional mindset is the foundation of our consultative platform. We believe that by removing the transactional wall, we can establish clearer lines of communication, enabling us to effectively navigate challenges together and drive successful outcomes.





TIMELY AND RELEVANT COMMUNICATION ENSURES REDUCED REDUNDANCY



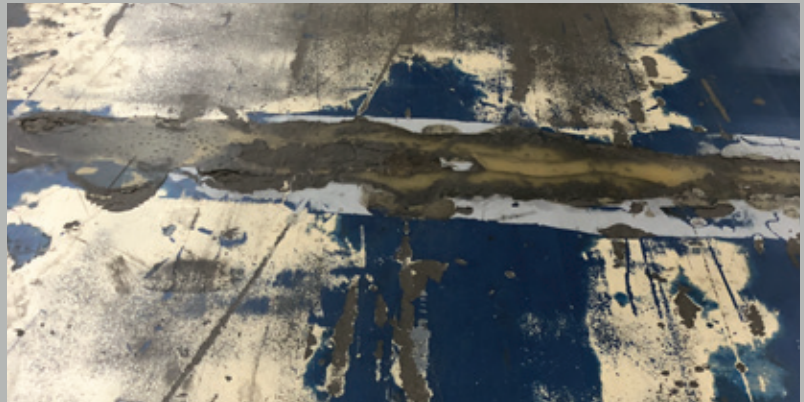
As a consultative manufacturer committed to being your partner rather than just a vendor, we will meet you at any stage. By establishing clear communication about your current status in the process, we can provide tailored support.

Our team is available for research discussions during development and preliminary budgetary needs. We provide unbiased education during the final solution design and assist in aligning the right resources for project execution. As your partner, we actively seek objective feedback post-project, all while reducing redundancy for future needs by remaining engaged beyond a transactional level.

C
O
M
M
O
N

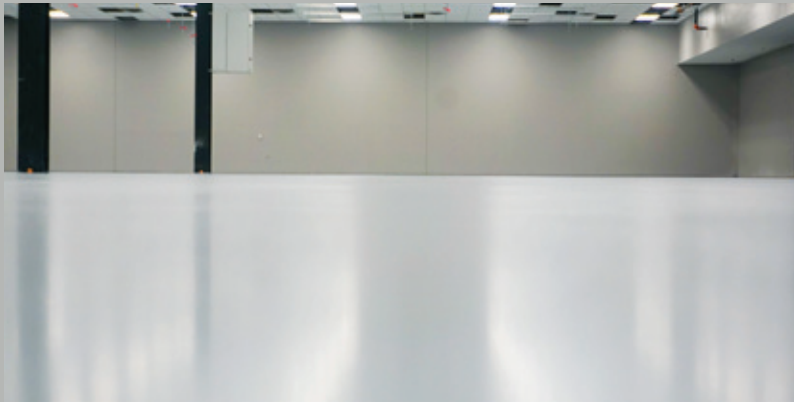
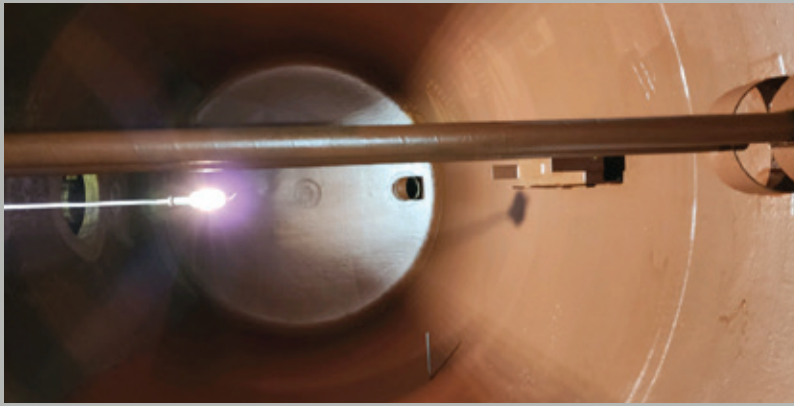
P
R
O
B
L
E
M
S

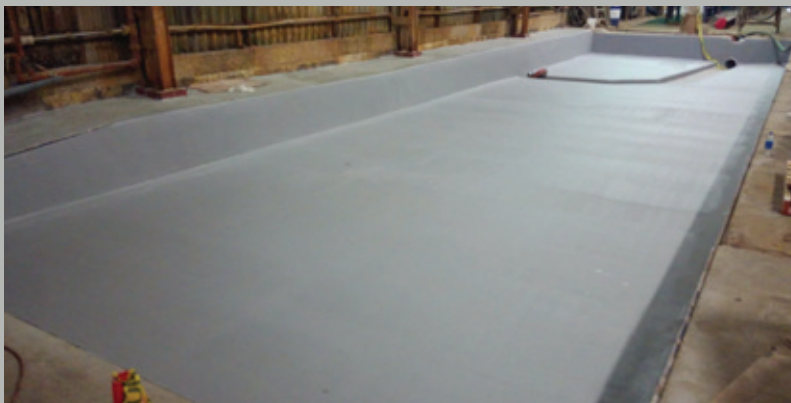
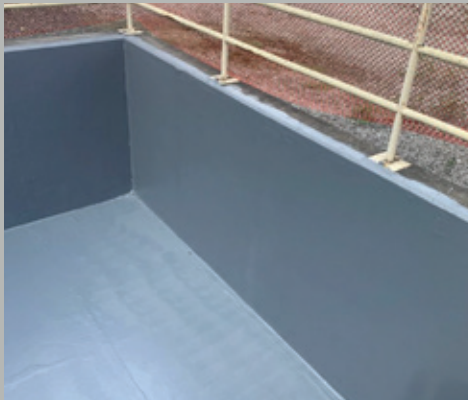




C
O
M
M
O
N
P
R
O
B
L
E
M
S

S
O
L
U
T
I
O
N
S

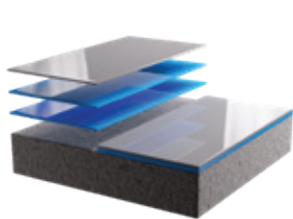




S
O
L
U
T
I
O
N
S

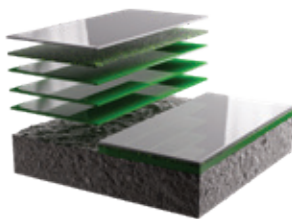
PROTECT SYSTEMS

Industrial Flooring Solutions



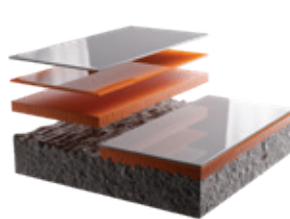
CT-Series COATING

A coating system is a protective film over the concrete that creates a durable, cleanable, stain resistant and aesthetically desirable finish.



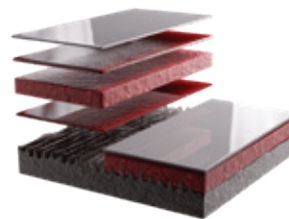
BC-Series BROADCAST

A broadcast system is an aggregate enhanced coating system that provides increased durability, a built in texture, and improved impact characteristics.



SL-Series SLURRY

A slurry is comprised of a polymer resin filled with fine aggregate(s). When placed, the batter like substance self levels and cures, filling concrete voids and forming a shield over concrete.



MT-Series MORTAR

A mortar is an engineered mix of aggregate bound together with polymer resin and then compacted to form a very dense shield over concrete.

PRODUCT APPENDIX

EPOXY COATINGS
URETHANE
HYBRID TECHNOLOGIES
POLYASPARTICS
EPOXY MORTAR
URETHANE CONCRETE

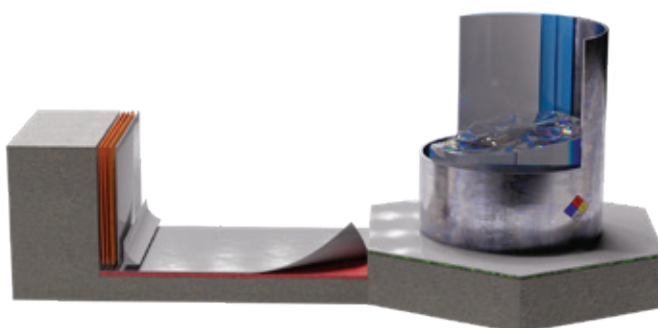
VINYL ESTER
DECORATIVE FLOORING
CEMENTITIOUS
CONCRETE DENSIFIERS
CONCRETE TREATMENTS
COVE MORTAR

TRAFFIC LINE
STEEL FILLED MORTAR
ELASTOMERICS
POLYUREAS
MOISTURE VAPOR PRODUCTS
NOVALACS

WALL SYSTEMS



LININGS & CONTAINMENT SOLUTIONS



Mica Flake-Reinforced Vinyl Ester Coating & Lining Systems
Fiberglass Reinforced Vinyl Ester Lining Systems
Glass Flake-Reinforced Lining Systems for Steel Tanks
Vinyl Ester Broadcast Floor Topping Systems

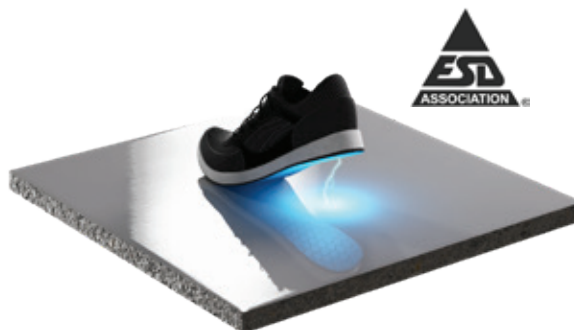
SPECIALTY PERFORMANCE



InhibiCrobe

ANTIMICROBIAL
TECHNOLOGY

InhibiCrobe antimicrobial systems work at a cellular level to continually disrupt and inhibit the growth of harmful microorganisms and even contribute to protect surfaces against viruses.



InhibiStat

ELECTROSTATIC
DISCHARGE

With its integrated ESD technology, InhibiStat provides an electrically active surface that effectively dissipates built-up static electricity from personnel and equipment, directing it through the floor and safely grounding it.

NICHE SYSTEMS

ANIMAL SPEC

BREW SPEC

DATA SPEC

DEALER SPEC

HANGAR SPEC

HEALTH SPEC

HORTI SPEC

KITCHEN SPEC

RESCUE SPEC

RESTAURANT SPEC

TRUCK SPEC

ZOO SPEC

COLOR & DECORATIVE MEDIA GUIDES

Virtually unlimited color options, including the following common color choices:

101 - White Gray	122 - Light Gray	124 - Medium Gray	126 - Night Gray
526 - Aisle Green	451 - Machine Blue	142 - Blue Gray	450 - Safety Blue
332 - Tile Red	350 - Safety Red	684 - Signal Yellow	248 - Beige

Decorative Finishes

QUARTZ CAST
CHROMA FLAKE
LUSTER FLAKE
LUMISWIRL

Wear Additives

DIAMOND WEAR
GLOSS GRIP

THE FIRST IN MAKING IT LAST



CONCRETE
PROTECTION

CONTRACTOR
PARTNER

CUSTOMER
COMMITTED

PROTECTPOLY.COM
INFO@PROTECTPOLY.COM
(800) 974-1323