

PROTECTIVE INDUSTRIAL POLYMERS MISSION:
 TO PROVIDE EXCEPTIONAL VALUE-ADDED PRODUCTS,
 SERVICE AND SOLUTIONS, IN JOINT INTEREST WITH OUR
 CONTRACTING CUSTOMER NETWORK, TO COMPLETELY
 SATISFY END-USER INDUSTRIAL SAFETY, PERFORMANCE
 AND REGULATORY COMPLIANCE CONCERNS.



with Hoof-Guard technology.

www.zoospecfloors.com



7875 BLISS PARKWAY, NORTH RIDGEVILLE, OH 44039
 440-327-0015 - PHONE | 866-361-3331 - TOLL-FREE | 440-353-0549 - FAX
 INFO@PROTECTPOLY.COM | WWW.PROTECTPOLY.COM



Antimicrobial Floor & Wall Systems
 for Zoos & Aquariums



with Hoof-Guard technology.

Coatings | Contracting | Consulting





Zoos, Aquariums and wildlife refuges desire animal holding areas that are safe, hygienic, comfortable and ethically responsible. When it comes to wild animals in captivity, controlling microbe and parasitic growth is a crucial aspect of any zoological program. ZooSpec Antimicrobial Floor & Wall systems have been specifically developed to not only withstand the daily rigors of a zoo environment, but also provide a comprehensive approach to controlling microbe growth, as well as offer enhanced safety benefits.

Our floor and wall systems have been independently lab-tested and will not support growth of various molds, bacteria, mildew and fungus. Additionally, and unlike competitor's systems, ZooSpec systems are manufactured, quality-control tested and shipped with antimicrobial properties intact. Other manufacturers provide a separate antimicrobial additive that is field mixed into the polymer components prior to application. Unfortunately, this scenario is not verifiable or quantifiable, so you just don't know for sure if your floor and wall system will perform the way it was intended. With ZooSpec's revolutionary approach, you are assured consistent antimicrobial protection throughout the entire system, and even down into the concrete or block substrate. And best of all, the antimicrobial properties will remain effective for the life of the system. Simply put, if the ZooSpec floor or wall system is adhered and intact, it will not support the growth of dangerous microbes.

The World Deep Beneath Your Floors & Walls

Concrete, by its very nature, is a porous material that retains and transmits moisture. Concrete substrates are full of dark, damp crevices and capillaries that make it an ideal breeding ground for a number of microbes, including bacteria, fungi and various molds and spores. For zoos, aquariums and wildlife refuges, this scenario can pose a serious hygienic risk affecting your reputation and accreditations. Many cleaning and sanitization methods can aid in preventing the growth of microbes at the floor or wall surface level. However, normal or aggressive wear from animal traffic, abrasion loads, hot water wash downs and abrasive chemical cleaning can cause floor or wall surface damage. Wear, chips, spalls and cracks in your floors and walls are a perfect breeding ground for dangerous microbes. And because common cleaning/washdown techniques cannot penetrate deep into these areas, bacteria can live for extended periods and pose potential health threats. So, how does one achieve a redundant antimicrobial system that can address these concerns?

Achieving Deep Substrate Antimicrobial Protection

A thin-film floor or wall coating modified with an antimicrobial agent or surface treatment is simply not enough. The key to achieving comprehensive antimicrobial protection is to prevent the growth of microorganisms throughout the floor or wall system and deep within the concrete substrate.

All Protective Industrial Polymers' ZooSpec Floor and Wall Systems utilize an antimicrobial concrete pretreatment (Protect AM-PT/Protect AM-PT-BW) that penetrates beneath the coating system and deep within the concrete substrate. This pretreatment was developed for use where microbe or fungal growth concerns create the need to permanently hydrostatically seal the slab from within. This product penetrates deep into the concrete slab and forms an aqueous, antimicrobial gel. Subsequent antimicrobial joint fillers, coatings and overlays then complete the system.

With ZooSpec Floor and Wall Systems you are achieving multiple, dense layers of antimicrobial protection and a total system that penetrates up to 6" deep into the concrete or block substrate. No other manufacturer's process can even come close to this kind of antimicrobial protection.

Our antimicrobial additives are integral key ingredients in our products, not merely a surface treatment. All products that make up ZooSpec systems are protected against bacterial and fungal growth. The antimicrobial properties of these products will remain effective for the life of the system, even after repeated washings, sanitizations and decontaminations.

When installed by a Protective Industrial Polymers' recognized installer, you are not only getting the most comprehensive antimicrobial floor or wall system solution, but one that is properly installed and certified. All of our ZooSpec systems are verified by a PIP technical representative and a Certificate of Antimicrobial Treatment is issued.

ZooSpec Antimicrobial Floor and Wall Systems help promote hygiene, safety, performance, durability and aesthetics, as well as contribute to the ethical treatment of wild animals, allowing them to thrive responsibly in captivity.



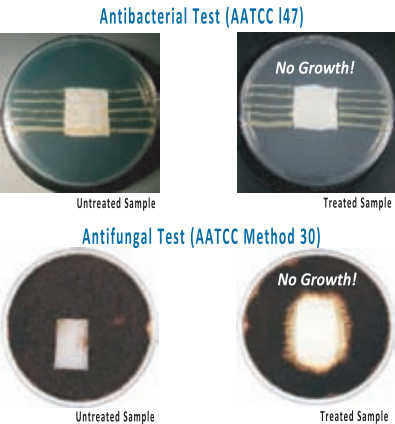
Hoof-Guard is an extremely hard, long-wearing broadcast media that adds the ultimate degree of wear and abrasion resistance to polymer coatings and resurfacers while maintaining a safe finish profile with greatly enhanced slip-resistance.

From an animal-care standpoint, Hoof-Guard provides a safe, natural way for captive hooved animals to maintain consistent and even hoof wear, requiring less hoof maintenance which translates to lower hoof maintenance costs. And best of all, the Hoof-Guard additive size and finish saturation can be tailored to the animal species' unique requirements.

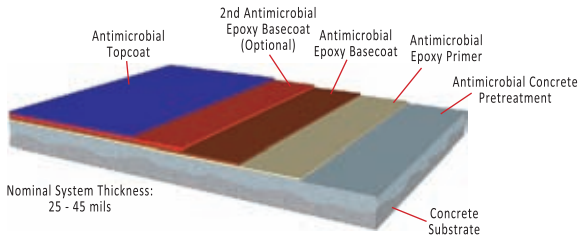
- Up to 300% Greater Wear
- Greatly Enhanced Slip-Resistance
- Much Longer Service Life
- Promotes Consistent, Even Hoof Wear
- Customizable Texture for Each Species
- Lower Hoof Maintenance Costs



* All PIP antimicrobial products have been thoroughly tested by an independent lab utilizing the test methods below. For more information or testing data, please contact Protective Industrial Polymers at (866) 361-3331.



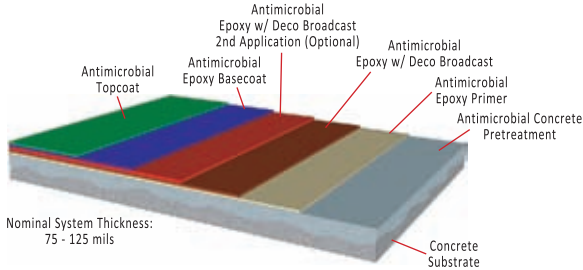
ZooSpec Antimicrobial Floor & Wall Systems



ZooSpec TB

Antimicrobial Thick-Build Coating System

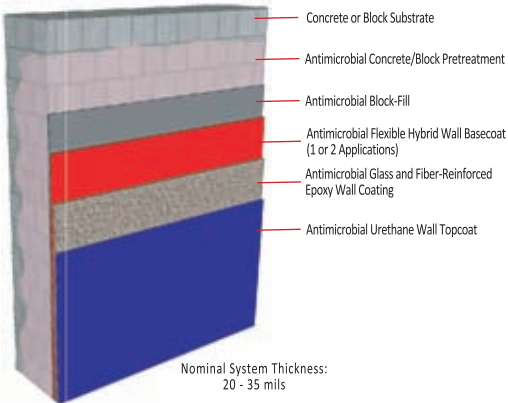
A high-performance antimicrobial coating system formulated for use in areas such as storage areas, surgical suites, walkways and laboratories where overall chemical resistance and light-reflectance are a requirement.



ZooSpec DS

Antimicrobial Decorative System

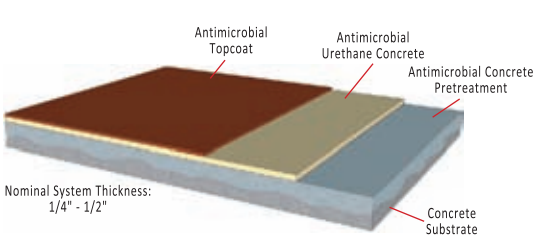
An antimicrobial decorative system designed for areas requiring comprehensive antimicrobial protection combined with durability and aesthetics. Common areas of use include walkways, corridors, cafeterias and restrooms.



ZooSpec FiberWall

Antimicrobial Glass and Fiber-Reinforced Wall System

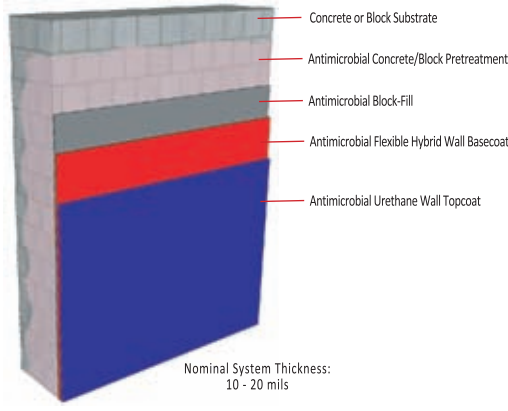
A high-performance, antimicrobial, reinforced epoxy wall system suited for process or packaging areas where enhanced chemical and wear resistance, as well as UV-stability are performance requirements.



ZooSpec SRM

Antimicrobial Shock-Resistant Mortar System

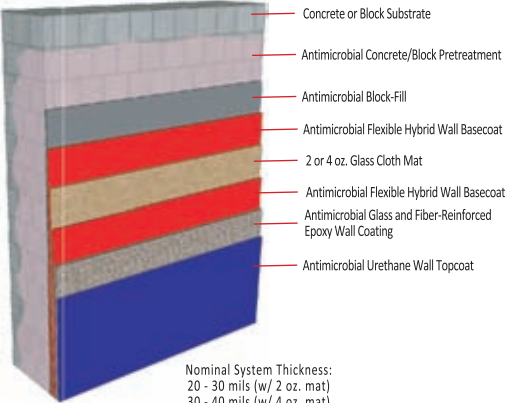
An antimicrobial mortar system designed for use in areas requiring durability, impact resistance and resistance to chemical and thermal-shock. Areas of use include animal enclosures or other areas subject to hot and cold water wash downs.



ZooSpec FlexWall

Antimicrobial Flexible Wall System

A high-performance, antimicrobial, flexible wall system suited for process or packaging areas where general chemical, impact and thermal-shock resistance are a performance requirement.



ZooSpec GlassMat

Antimicrobial Glass Cloth-Reinforced Wall System

An antimicrobial glass cloth-reinforced epoxy wall system that features a very smooth, easy-to-wash surface texture. This system is formulated for use in areas where superior chemical resistance, durability and UV-stability are crucial.

Areas of Use



Animal Enclosures/Holding Pens



Surgical Suites/Examination Rooms



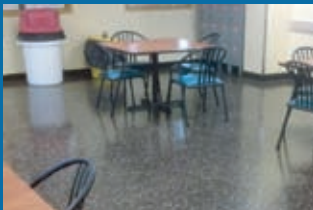
Display/Exhibit Areas



Washdown Areas



Walkways



Service Areas/Cafeterias/Restrooms

ZooSpec Floor & Wall Systems Features:

- Thermal shock resistance from frequent washdowns
- Protection from animal urine and fecal exposure
- Safe, non-slip surfaces
- Promotes natural hoof-maintenance and wear
- Decorative flake & quartz options
- Vast array of colors to match color scheme



For detailed product information, technical data and SDS Sheets visit www.protectpoly.com or call 1-866-361-3331 to speak with a Protective Industrial Polymers Representative.